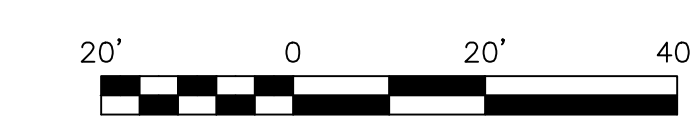
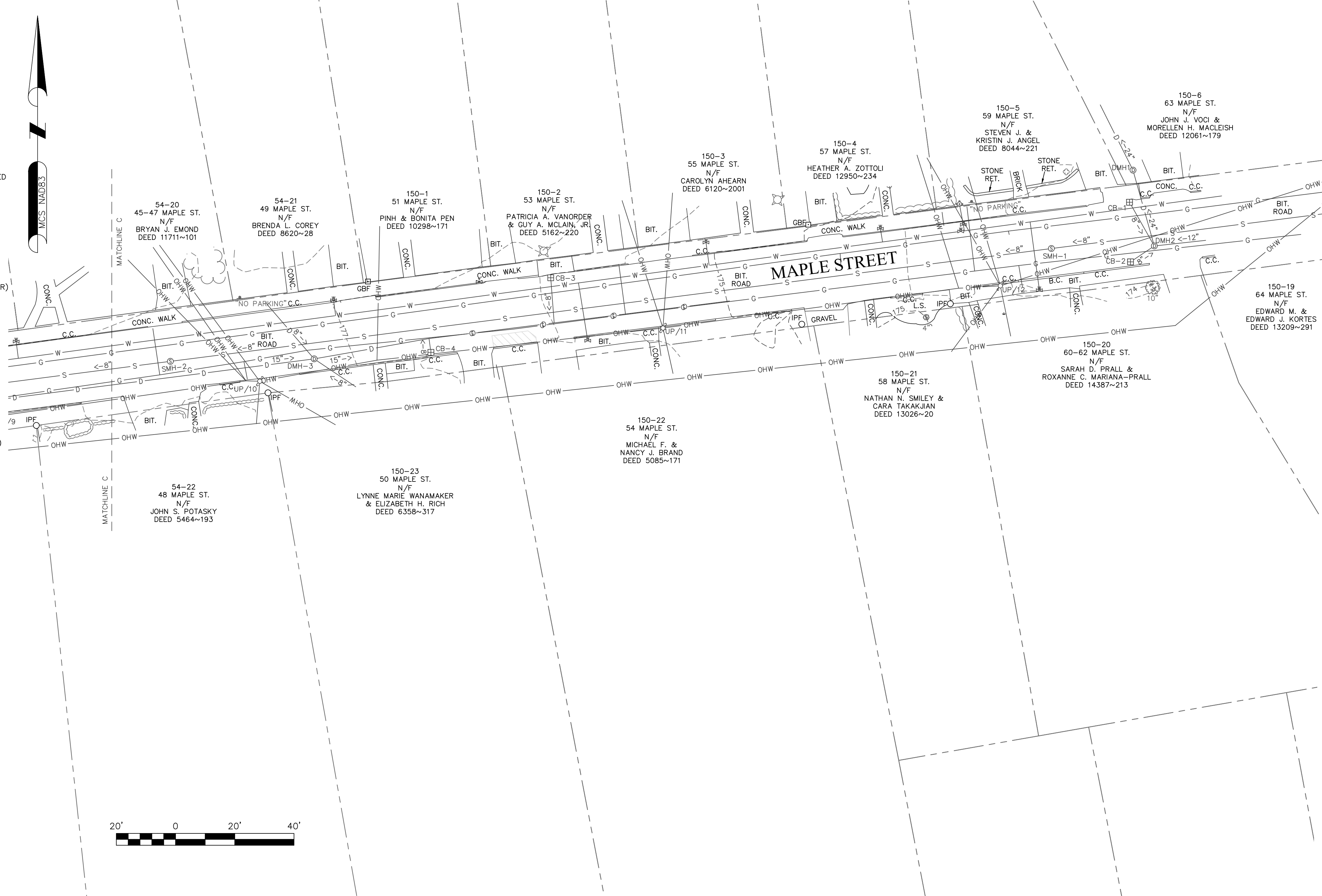


INVERT TABLE

<p>CB-1 RIM=173.18' 8" VC=170.24' OUT (TO DMH-2) SUMP=169.7'±</p> <p>CB-2 RIM=173.19 8" PVC=169.14' OUT (TO DMH-2) SUMP=168.9'±</p> <p>CB-3 RIM=175.79' 8" PVC=172.54' OUT (TO DRAIN LINE) SUMP=170.37'</p> <p>CB-4 RIM=176.50' 8" VC=172.82' OUT (TO DRAIN LINE) SUMP=173.1'± DEBRIS</p> <p>CB-5 RIM=177.99' 8" VC=174.29' OUT (TO DRAIN LINE) SUMP=173.5'±</p> <p>CB-6 RIM=178.39' 8" VC=175.46' OUT (TO DRAIN LINE) SUMP=175.2'±</p> <p>CB-7 RIM=178.43' 8" VC=174.95' OUT (TO DRAIN LINE) SUMP=174.4'±</p> <p>CB-8 RIM=178.61' 4" PVC=176.56' IN (FROM THE NW) 6" PVC=175.13' OUT (TO DRAIN LINE) SUMP=174.8'±</p> <p>CB-9 RIM=178.84' 4" PVC=177.34' IN (FROM THE E) 6" PVC=174.92' OUT (TO DRAIN LINE) SUMP=174.0'±</p> <p>CB-10 RIM=178.59' 8" VC=176.11' OUT (TO DMH-5) SUMP=174.3'±</p> <p>CB-11 RIM=178.51' 8" VC=175.46' OUT (TO DRAIN LINE) SUMP=175.4'± DEBRIS</p> <p>CB-12 RIM=178.63' 8" VC=175.53' OUT (TO DRAIN LINE) SUMP=175.2'±</p> <p>CB-13 RIM=178.59' 8" VC=175.63' OUT (TO DRAIN LINE) SUMP=175.3'±</p> <p>CB-14 RIM=178.86' 8" VC=175.93' OUT (TO DRAIN LINE) SUMP=175.3'±</p> <p>CB-15 RIM=179.47' 8" PVC=176.99' OUT (TO DMH-6) SUMP=174.4'±</p> <p>CB-16 RIM=178.77' 8" VC=176.60' IN (FROM THE NW) 6" VC=176.17' OUT (TO THE SW) SUMP=176.2'± DEBRIS</p> <p>CB-17 RIM=178.49' 8" VC=175.01' OUT (TO DRAIN LINE) SUMP=174.0'±</p> <p>CB-18 RIM=179.67' 8" UK=174.41' OUT (TO DRAIN LINE) SUMP=174.6'± DEBRIS</p> <p>CB-19 RIM=177.28' 8" VC=173.88' OUT (TO DRAIN LINE) SUMP=172.2'±</p> <p>CB-20 RIM=176.00' 8" VC=171.42' OUT (TO DRAIN LINE) SUMP=171.4'±</p> <p>CB-21 RIM=171.11' 8" VC=167.49' OUT (TO DMH-10) SUMP=167.4'±</p> <p>CB-22 RIM=171.15' 4" PVC=168.40' IN (FROM THE SW) 4" PVC=168.18' IN (FROM THE SE) 8" PVC=167.47' OUT (TO DMH-10) SUMP=166.6'±</p> <p>CB-23 RIM=170.75' 8" VC=167.00' OUT (TO DRAIN LINE) SUMP=166.9'±</p> <p>CB-24 RIM=170.48' 12" VC=167.02' OUT (TO DMH-13) BACKFLOWS SUMP=167.0'±</p> <p>CB-25 RIM=170.14' 6" PVC=167.14' OUT (TO DMH-13) SUMP=167.1'±</p>	<p>DMH-1 RIM=173.58' 24" RCP=167.03' IN (FROM DMH2) BACKFLOW 24" RCP=166.58' OUT (TO THE N)</p> <p>DMH-2 RIM=173.42' 8" VC=169.18' IN (FROM CB1) 8" VC=169.06' IN (FROM CB2) 12" RCP=167.30' IN (FROM THE E) 24" RCP=166.67' OUT (TO DMH-1) BACKFLOW</p> <p>DMH-3 RIM=177.17' 8" PVC=172.55' IN (FROM THE SE) 8" UK=171.98' IN (FROM THE NW) 15" UK=168.91' IN (FROM DMH-4) 15" UK=168.88' OUT (TO THE E)</p> <p>DMH-4 RIM=179.41' 12" UK=170.75' IN (FROM THE N) 15" UK=170.64' IN (FROM DMH-5) 15" UK=170.67' OUT (TO DMH-3)</p> <p>DMH-5 RIM=179.14' 8" CI=173.18' IN (FROM CB-10) 15" UK=171.49' IN (FROM DMH-6) 15" UK=171.36' OUT (TO DMH-4)</p> <p>DMH-6 RIM=179.06' 8" VC=174.56' IN (FROM CB-15) 15" VC=172.92' IN (FROM DMH-7 TO DMH-5) THROUGH PIPE W/A CUT OUT IN TOP</p> <p>DMH-7 RIM=180.37' 12" RCP=172.97' IN (FROM THE SE) 12" RCP=172.95' OUT (TO DMH-6)</p> <p>DMH-8 RIM=179.22' 8" VC=175.23' IN (FROM THE NE) 8" VC=175.24' IN (FROM THE SE) 12" VC=174.92' OUT (TO DMH-9)</p> <p>DMH-9 RIM=175.27' 12" RCP=169.73' IN (FROM DMH-8) 12" RCP=169.72' OUT (TO DMH-10)</p> <p>DMH-10 RIM=171.10' COULD NOT OPEN--PAVED OVER</p> <p>DMH-11 RIM=168.45' 12" UK=163.10' IN (FROM THE NE) 12" UK=163.19' IN (FROM DMH-10) 18" UK=161.93' IN (FROM DMH-12) 18" UK=161.97' OUT (TO THE NW)</p> <p>DMH-12 RIM=173.27' TOP PIPE=165.38' ENCLOSED NO INVERT VISIBLE</p> <p>DMH-13 RIM=170.25' 6" PVC=166.98' IN (FROM CB-25) 8" VC=167.05' IN (FROM THE N) 12" VC=166.38' IN (FROM CB-24) BACKFLOWS 8" VC=166.90' OUT (TO THE S)</p> <p>DMH-14 RIM=169.00' 8" UK=165.36' IN (FROM THE E) 8" UK=165.21' IN (FROM THE E) 8" UK=165.20' OUT (TO THE W) 8" UK=165.09' OUT (TO THE W)</p> <p>DMH-15 RIM=180.00' 12" UK=171.50' IN (FROM THE NE) 12" UK=171.28' IN (FROM THE SW) 12" UK=171.08' OUT (TO THE NW)</p>	<p>SMH-1 RIM=173.64' 8" VC=169.09' IN (FROM THE W) 8" VC=169.07' OUT (SMH2)</p> <p>SMH-2 RIM=177.78' 8" VC=168.29' IN (FROM SMH-1) 8" VC=168.24' OUT (TO SMH-3)</p> <p>SMH-3 RIM=179.39' 8" UK=167.37' IN (FROM SMH-2) 8" UK=173.13' IN (FROM THE N) COVERED 8" UK=167.42' OUT (TO SMH-4)</p> <p>SMH-4 RIM=179.11' 8" VC=167.12' IN (FROM SMH-5) 6" UK=172.38' IN (FROM THE SE) 8" VC=167.08' IN (FROM SMH-3) 8" VC=167.08' OUT (TO SMH-6)</p> <p>SMH-5 RIM=179.40' 8" CI=174.45' OUT (TO SMH-4) W/COVER) SUMP=174.7'±</p> <p>SMH-6 RIM=175.50' 8" VC=166.36' IN (FROM SMH-4) 8" VC=166.24' OUT (TO SMH-7)</p> <p>SMH-7 RIM=170.50' 8" UK=161.30' IN (FROM THE N) 8" UK=161.58' IN (FROM SMH-6) 8" UK=161.20' OUT (TO SMH-9)</p> <p>SMH-8 RIM=184.79' 12" UK=159.51' TOP (ENCLOSED DRAIN PIPE FROM SE TO NW) 8" VC=154.83' IN (FROM THE SE) 8" VC=154.71' IN (FROM SMH-9) 8" VC=154.61' OUT (TO THE NW)</p> <p>SMH-9 RIM=170.35' 8" UK=160.59' IN (FROM SMH-7) 8" UK=157.65' IN (FROM SMH-7) 8" UK=157.49' IN (FROM SMH-10) 8" UK=157.47' OUT (SMH-8)</p> <p>SMH-10 RIM=172.73' 12" UK=165.03' IN (FROM THE SE) 8" UK=158.52' IN (FROM SMH-11) 8" UK=158.53' IN (FROM THE SW) 8" UK=158.50' OUT (TO SMH-9)</p> <p>SMH-11 RIM=178.76' 8" TROUGH=167.27' (N FROM SMH-12 OUT TO SMH-10)</p> <p>SMH-12 RIM=180.16' 8" UK=171.28' IN (FROM THE SE) 8" UK=168.45' IN (FROM THE SE) 8" UK=168.36' IN (FROM SMH-13) 8" UK=168.13' OUT (TO SMH-11)</p> <p>SMH-13 RIM=180.27' 8" UK=168.79' IN (FROM THE E) 8" UK=168.86' OUT (TO SMH-12)</p>
--	---	--



LEGEND

<ul style="list-style-type: none"> ⊠ CATCH BASIN ⊙ DRAIN MANHOLE ⊙ ROOF DRAIN ⊙ SEWER MANHOLE ⊙ WATER GATE VALVE ⊙ GAS GATE VALVE ⊙ GAS METER ⊙ UTILITY POLE ⊙ LIGHT POLE ⊙ ELECTRIC METER ⊙ GUY WIRE ANCHOR ⊙ SIGN POST ⊙ POST ⊙ DECIDUOUS TREE ⊙ CONIFEROUS TREE ⊙ BUSH ⊙ TEMPORARY BENCHMARK (TBM.) ⊙ BOUND FOUND ⊙ IRON PIPE OR ROD FOUND ⊙ STUMP 	<ul style="list-style-type: none"> — LOCUS PROPERTY LINE - - - ABUTTING PROPERTY LINE - - - EASEMENT LINE - - - CHAIN LINK FENCE - - - STOCKADE FENCE - - - GUARD RAIL — OHW — OVERHEAD WIRES - - - BURIED UTILITY LINE - - - YELLOW PAINT LINE - - - WHITE PAINT LINE - - - CONTOUR LINE - - - HEDGE ⊙ WATER METER ⊙ IRRIGATION CONTROL BOX ⊙ FLOOD LIGHT ⊙ TRAFFIC CONTROL BOX ⊙ MAILBOX 	<ul style="list-style-type: none"> 54-24 ASSESSORS ID BIT. BITUMINOUS CONC. CONCRETE GRAV. GRAVEL G.C. C.C. B.C. GRANITE/CONC./BIT. CURB N/F NOW OR FORMERLY L.S. LANDSCAPED C/T TELECOMMUNICATIONS D DRAIN E ELECTRIC G GAS S SEWER W WATER
---	---	---

NOTES:

- FIELD SURVEY BY EDM TOTAL STATION IN MARCH & APRIL, 2022.
- THE HORIZONTAL DATUM OF THIS PLAN IS NAD83, MASSACHUSETTS MAINLAND COORDINATE SYSTEM. THE VERTICAL DATUM IS NAVD88. BOTH WERE DERIVED FROM AN RTK GPS SURVEY PERFORMED ON SITE.
- THE LOCATION OF UTILITY STRUCTURES SHOWN HEREON ARE FROM OBSERVED FIELD EVIDENCE, RECORD PLANS AND OPENING DRAIN & SEWER STRUCTURES. THIS PLAN DOES NOT DEPICT THE EXACT LOCATION OF UNDERGROUND UTILITIES & MAY NOT SHOW ALL OF THE UTILITIES WHICH EXIST WITHIN THE PREMISES SURVEYED. PLEASE CONTACT DIG-SAFE AT 1-888-344-7233 BEFORE EXCAVATION.
- THE SURVEY AREA IS LOCATED IN AN AREA DESIGNATED AS ZONE C (AREAS OF MINIMAL FLOODING) AS SHOWN ON FLOOD INSURANCE RATE MAP COMMUNITY PANEL NUMBER 250160 0020 B, DATED 8/15/1979.
- THIS IS NOT A BOUNDARY SURVEY; HOWEVER, BOUNDARIES AROUND THE SCHOOL STREET PROPERTY SHOWN HEREON ARE BASED ON MONUMENTS FOUND AND REVIEW OF AVAILABLE DEEDS AND PLANS.

BRIAN C. FRANETOVICH
MA PLS #54258

NORTHEAST SURVEY CONSULTANTS
3 FERRY STREET
STUDIOS LEAST
EASTHAMPTON, MA 01027
(413) 203-5144

EXISTING CONDITIONS

ENGINEER: BCF

DESIGN: JDG

HORIZ. SCALE: 1"=20'

VERT. SCALE: 21-279

DATE: 04-29-2022

PLAN OF LAND IN
EASTHAMPTON, MA
MAPLE STREET SCHOOL
PREPARED FOR
VANASE HANGEN BRUSTLIN, LLC

SURVEYOR: BCF

PROJECT NUMBER: 21-279.DWG

DRAWING NAME: 04-29-2022

SHEET NO. 3 OF 3